

**Tighe &
Bond**



**Connecticut River
Conservancy**

D. F. Riley Grist Mill Dam Removal

Public Meeting
May 7, 2026



TODAY'S

Outline

- Introduction
- Project Site
- Project History & Goals
- Work Completed to Date
- Modeling Results
- Preliminary Design Plans
- Permitting
- Ongoing Studies
- Schedule

Introduction

PROJECT OWNERS

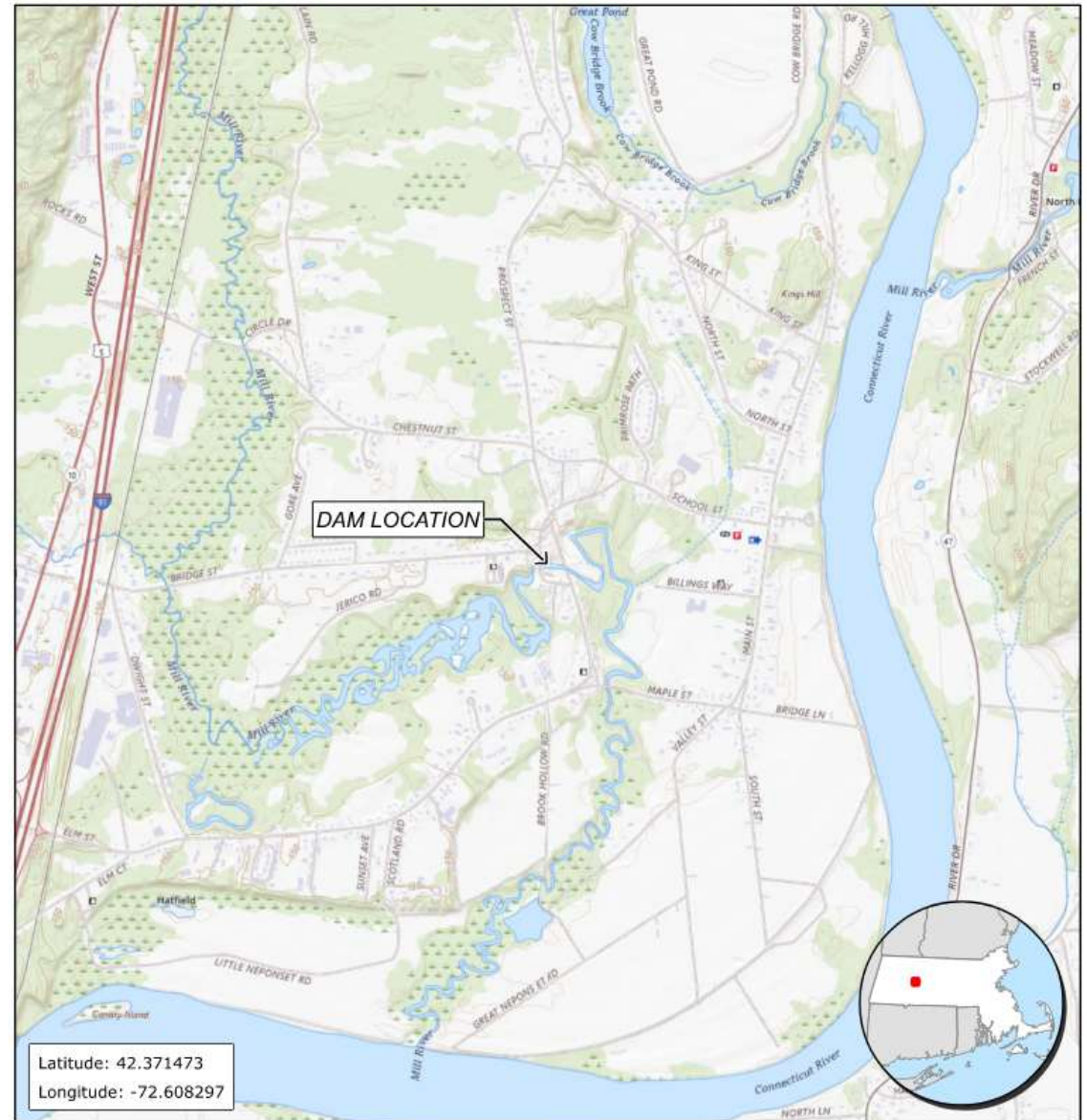
- Old Mill Enterprises, LLC
- Mill River Storage, LLC

PARTNERS

- Connecticut River Conservancy | Project Manager
- Town of Hatfield | Stakeholder
- MassWildlife | Funder
- MA EEA | Funder
- USFWS | Funder
- The Nature Conservancy | Funder
- Tighe & Bond | Engineer

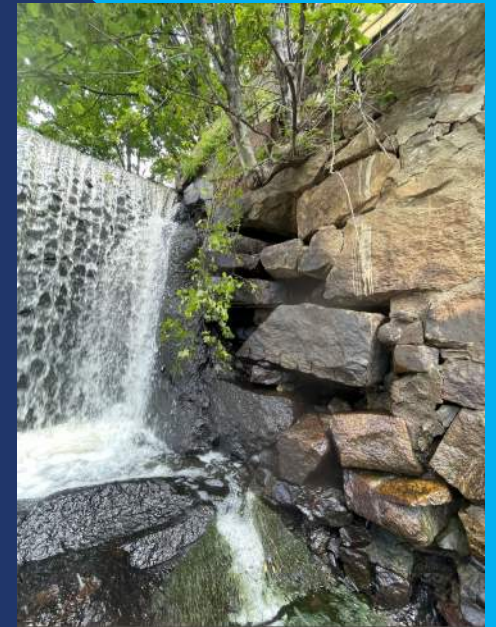
Project Site

- Intermediate-sized, Significant hazard dam
- National Register of Historic Places - Old Mill Site Historic District and Mill-Prospect Street Historic District
- Tributary to the CT River
- Coldwater Fishery Resource
- Priority Habitat of Rare Species



Project History

- Dam in this location since 1661; current dam constructed in 1881.
- Condition rating of the dam is Unsafe.
- Substantial deficiencies have been documented since at least 2017.
- Dam owners received a Certificate of Non-Compliance and a Dam Safety Order.
- Dam owners have considered:
 - Hydropower
 - Gifting the dam to the Town
 - Rehabilitation



Project Goals

- Reduce liability and cost
- Improve stream connectivity
- Restore natural river processes

PUBLIC SAFETY

Reduce the risks to upstream and downstream properties posed by uncontrolled failure or breaching

ECOLOGY

Maintain or enhance ecosystem function

HISTORICAL AND CULTURAL RESOURCES

Honor the historical and community importance of the site

Challenges

1. Construction access
2. Historic buildings
3. Cultural resources
4. Rare species
5. Shallow wells



Work Completed to Date

DATA REVIEW & COLLECTION

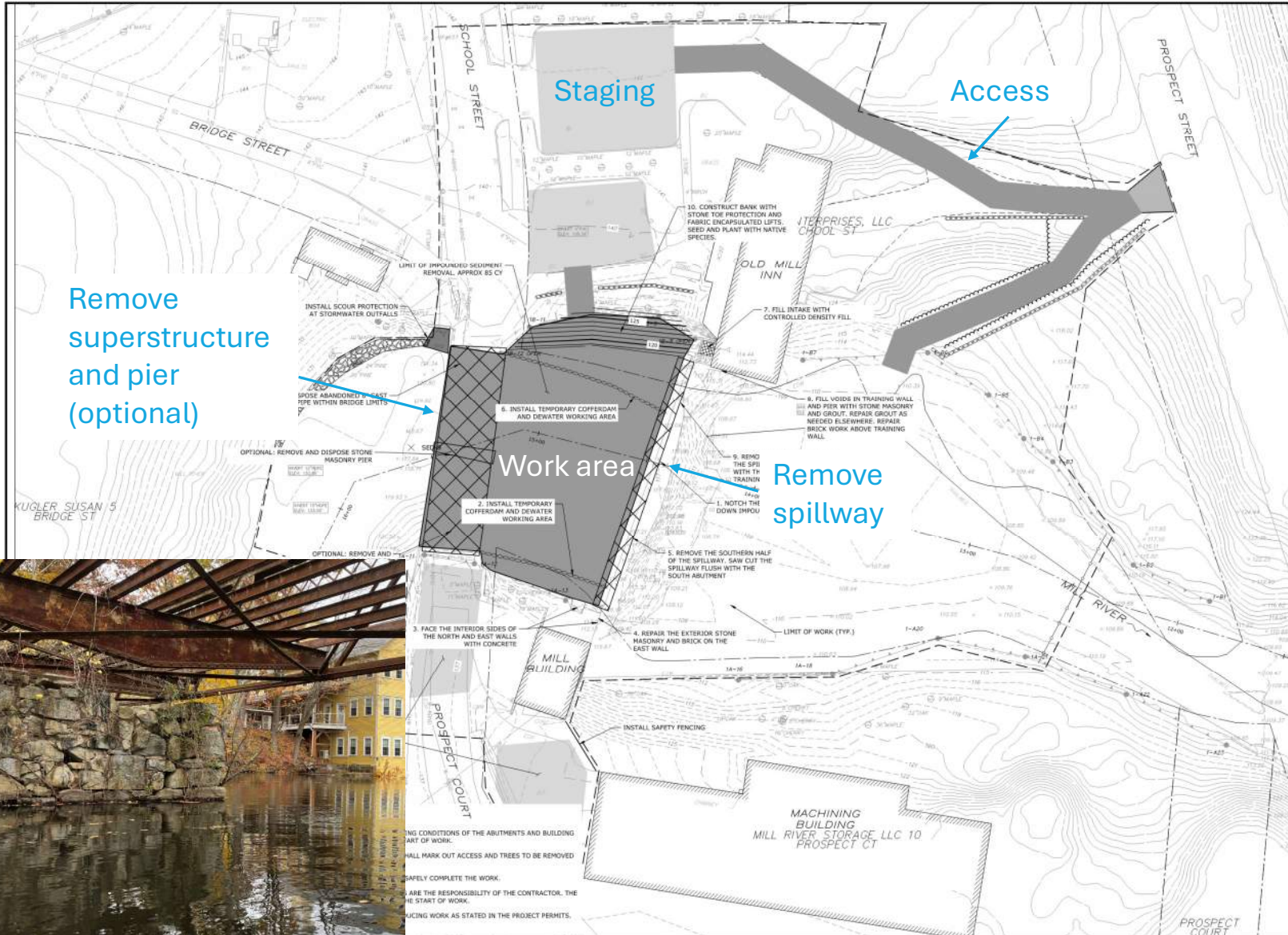
- Wetland delineation
- Topo survey
- Bathymetric survey
- Sediment probing
- Sediment sampling and testing

STUDIES

- Structural assessment
- Cultural Resources Assessment
- Phase 1 inspection

DESIGN

- Hydrologic analysis
- Hydraulic modeling
- Conceptual design
- Pre-application meetings with regulators



PRELIMINARY DESIGN

THIS DOCUMENT IS RELEASED TEMPORARILY FOR PROGRESS REVIEW ONLY. IT IS NOT INTENDED FOR BIDDING OR CONSTRUCTION PURPOSES.

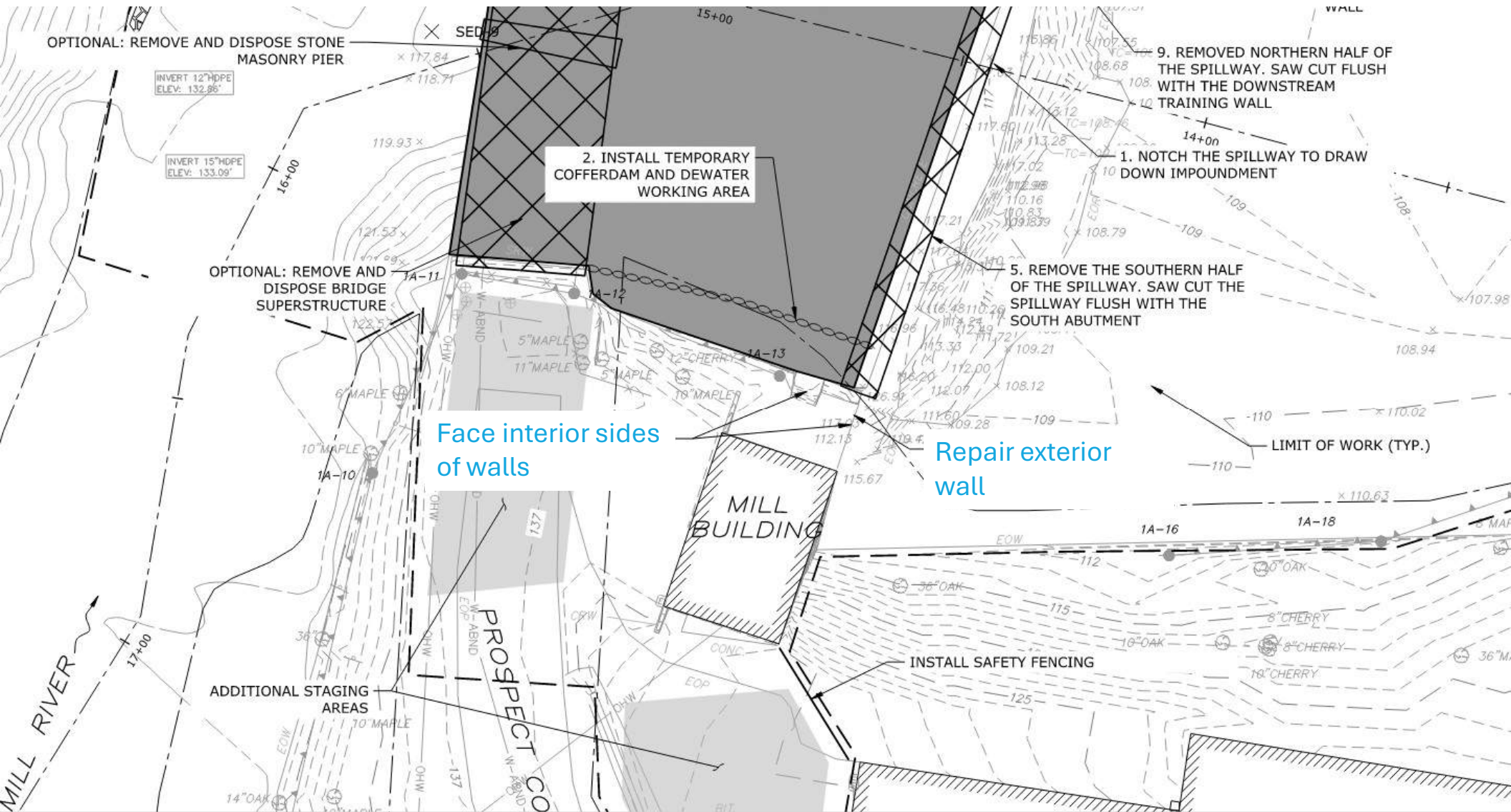
D.F. RILEY GRIST MILL DAM REMOVAL

Connecticut River Conservancy
Hatfield, MA

MARK	DATE	DESCRIPTION
PROJECT NO.:	CL305-063	
DATE:	JANUARY 2020	
FILE:	CL305-063_PROPOSED.dwg	
DRAWN BY:		
CHECKED BY:		
APPROVED BY:		

PROPOSED CONDITIONS - 2 OF 2

SCALE:
C-104
SHEET 7 OF 8



OPTIONAL: REMOVE AND DISPOSE STONE MASONRY PIER

INVERT 12" HDPE ELEV: 132.86'

INVERT 15" HDPE ELEV: 133.09'

2. INSTALL TEMPORARY COFFERDAM AND DEWATER WORKING AREA

OPTIONAL: REMOVE AND DISPOSE BRIDGE SUPERSTRUCTURE

5. REMOVE THE SOUTHERN HALF OF THE SPILLWAY. SAW CUT THE SPILLWAY FLUSH WITH THE SOUTH ABUTMENT

9. REMOVED NORTHERN HALF OF THE SPILLWAY. SAW CUT FLUSH WITH THE DOWNSTREAM TRAINING WALL

1. NOTCH THE SPILLWAY TO DRAW DOWN IMPOUNDMENT

Face interior sides of walls

Repair exterior wall

MILL BUILDING

LIMIT OF WORK (TYP.)

INSTALL SAFETY FENCING

ADDITIONAL STAGING AREAS

PROSPECT CO

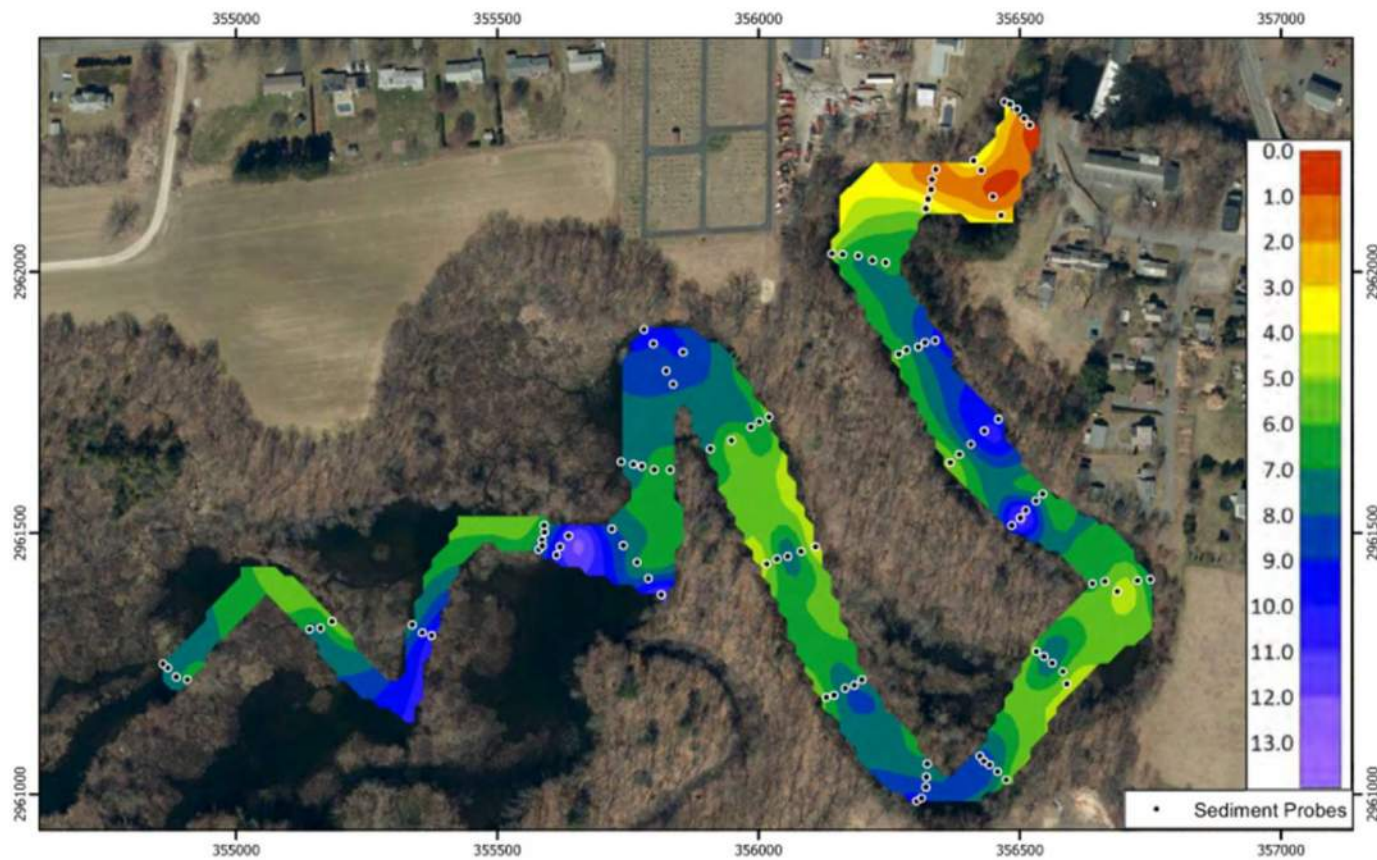
MILL RIVER

Impounded Sediment

- Sand and silt
- Clean relative to state reporting thresholds and ecological thresholds

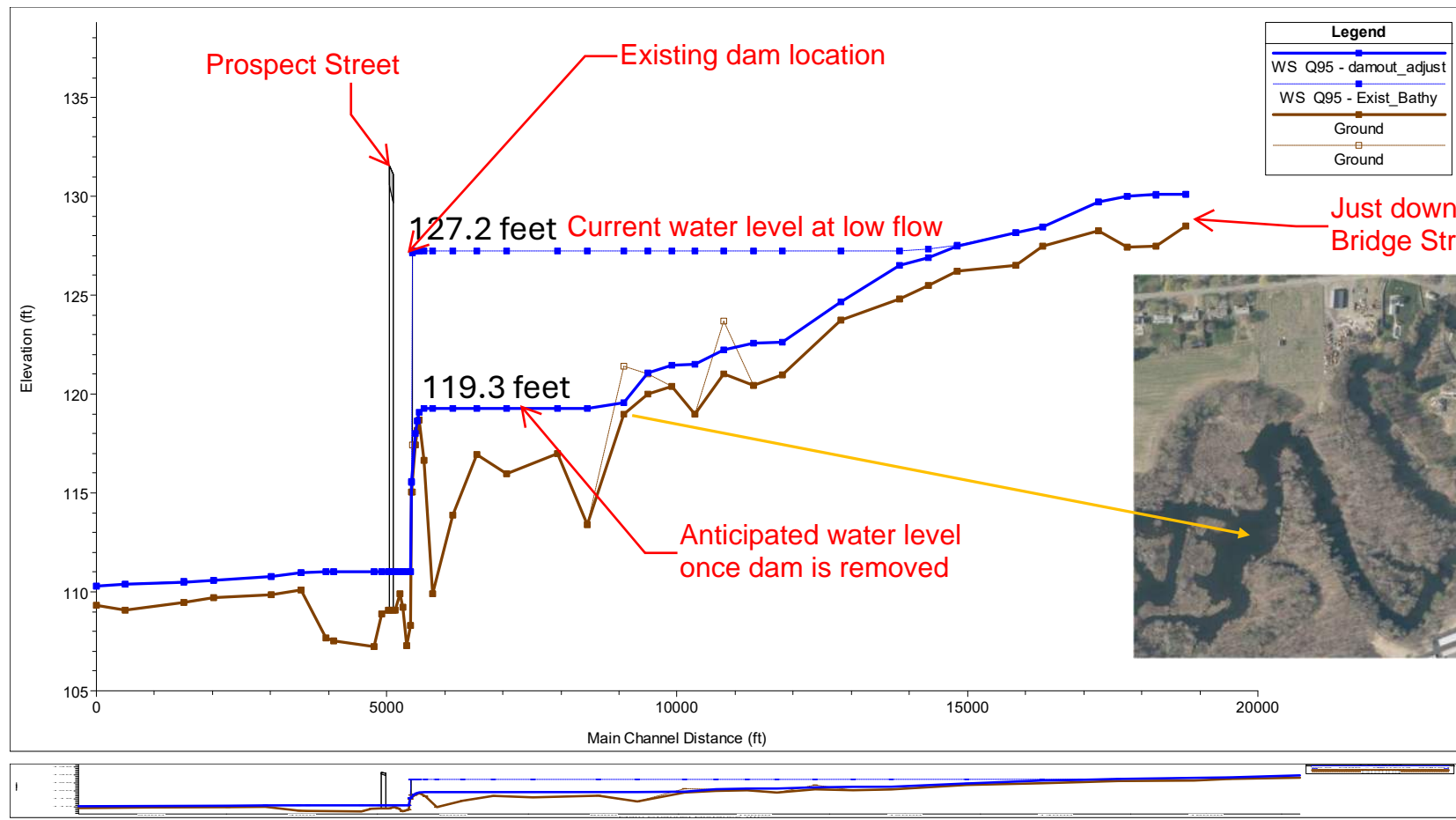


Impounded Sediment



Hydraulic Modeling - Low Flow

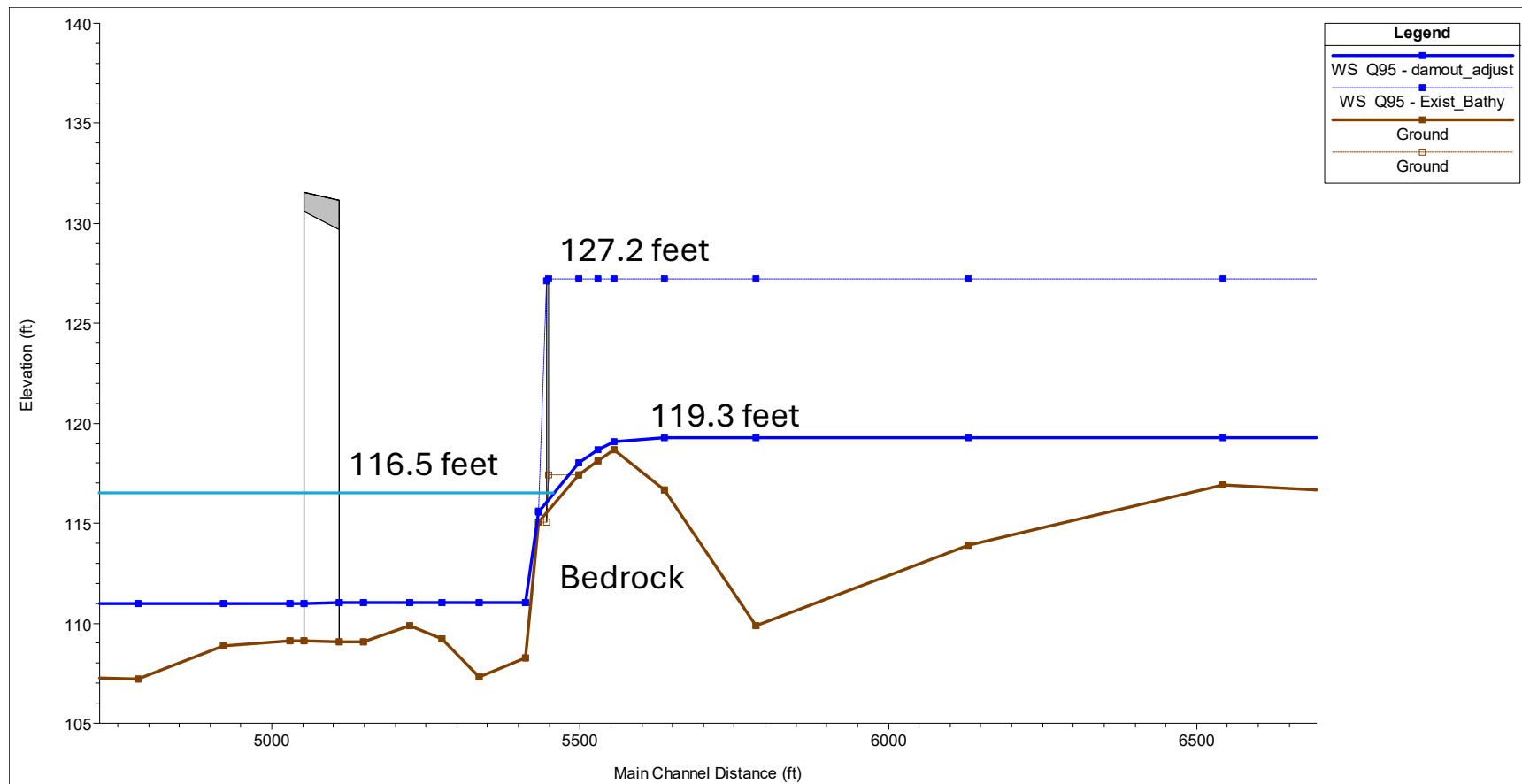
Modeling indicates that normal water levels will drop up to approximately 8 feet at the current dam location. The water level difference will decrease with distance upstream towards Bridge Street. The exact change at Bridge Street will depend on changes in the stream bed, beaver activity,



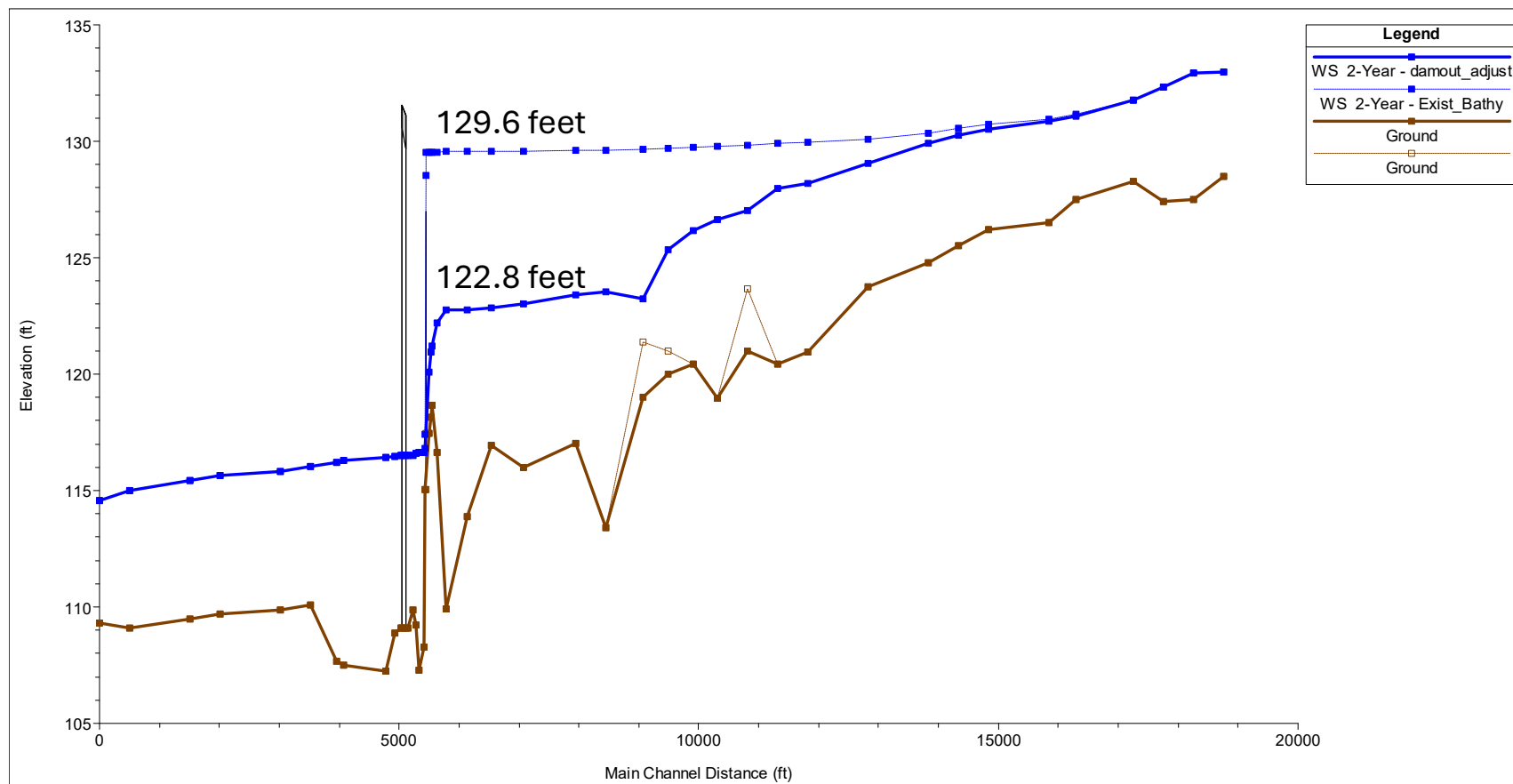
The top figure is vertically exaggerated. The bottom figure is shown with less vertical exaggeration.

Bedrock at existing dam location will control upstream stream bed and water levels after the dam is removed.

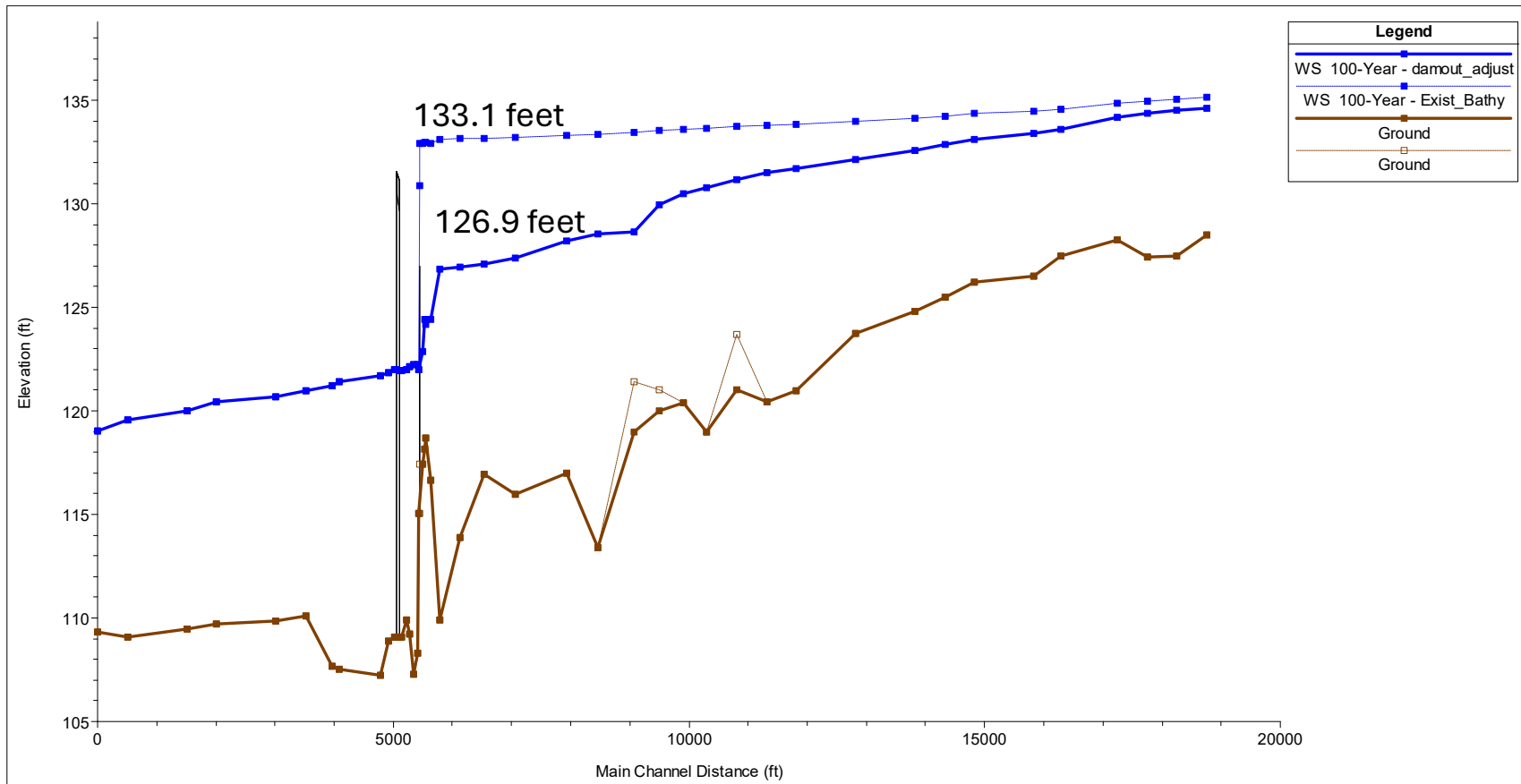
Hydraulic Modeling - Low Flow



Hydraulic Modeling - 50% AEP

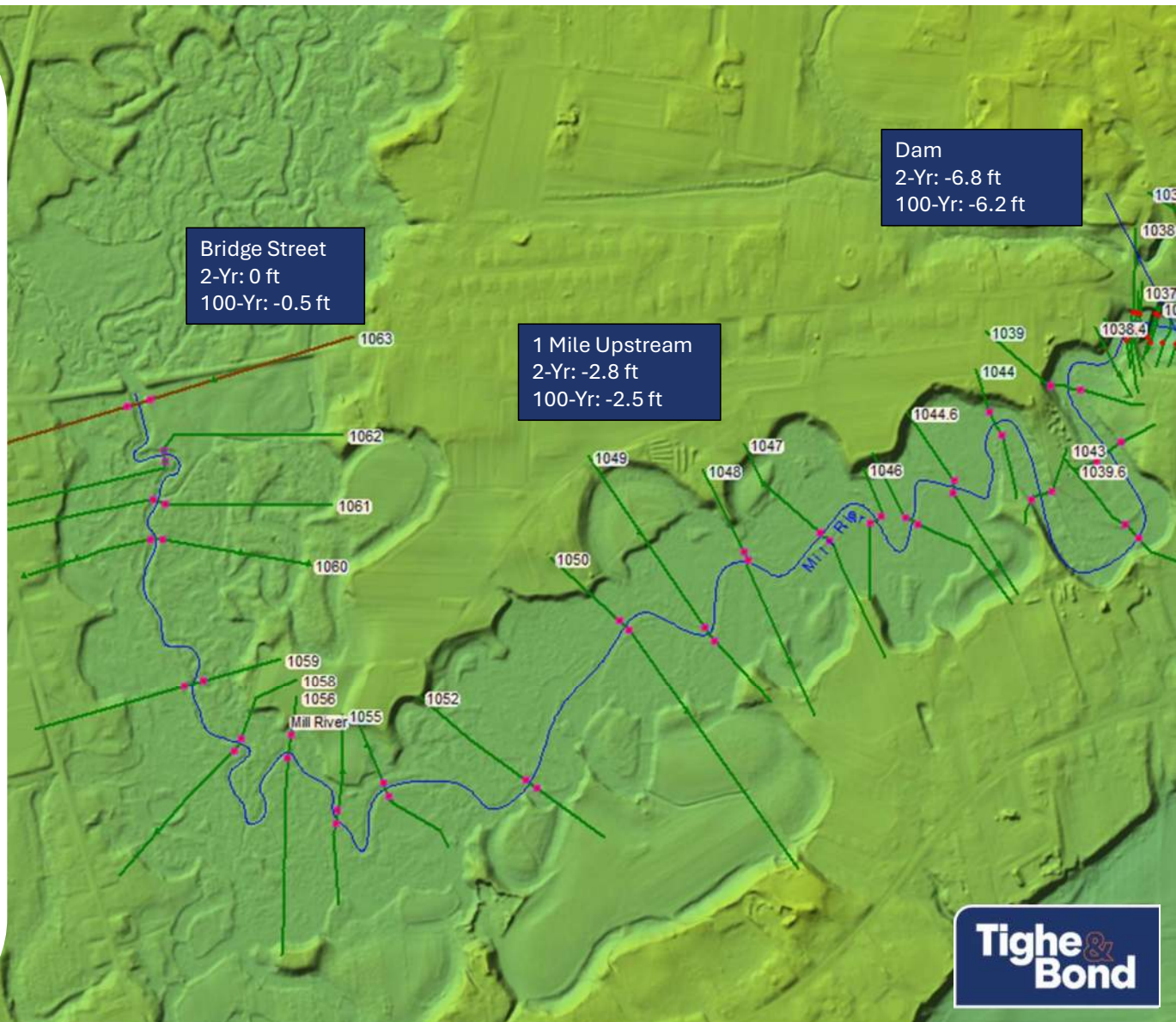


Hydraulic Modeling - 1% AEP



Anticipated Changes

- Decrease with distance from dam
- Channel: Transition from impounded to flowing, actively migrating river
- Off-channel areas: Transition from permanently inundated to low-lying floodplain wetland



Wells

- Many area wells are deep and draw from bedrock aquifer (200+ feet) - No impacts expected
- Shallow wells exist on Jericho Road - Detailed well information needed to determine potential impacts



Ecology

- Wetlands
- Rare species
- Other wildlife



Anticipated Permits

MEPA

Notice of Ecological Restoration Project

Historical Agencies and Tribes

Project Notification Form

MassDEP

Section 401 Water Quality Certification

US Army Corps

Section 404 Pre-Construction Notification

NHESP

Project Review Checklist

Hatfield Conservation Commission

Ecological Restoration Order of Conditions

MassDCR Office of Dam Safety

Dam Safety Permit

Chapter 91

TBD

Ongoing Studies

- Water-level monitoring
- eDNA study



Schedule

- Permit-level design - June 2026
- Permitting - Summer 2026 through 2027
- Final design - Spring 2028
- Bidding - Fall 2028
- Construction - Winter 2028/29

Q & **A**

**Tighe &
Bond**